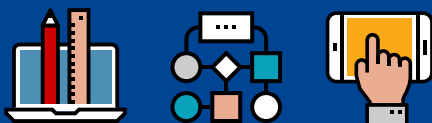


## INTERREG EUROPE PROGRAMME

The Interreg Europe programme, financed by the European Regional Development Fund (ERDF), is designed to support policy-learning among the relevant policy organisations with a view to improving the performance of regional development policies and programmes. It allows regional and local public authorities and other players of regional relevance across Europe to exchange practices and ideas on the way public policies work, and thereby find solutions to improve their strategies for their own citizens.



UP  
Europe

SPEED Up supports  
capacity building  
and policy  
learning on  
entrepreneurship  
and business  
incubation in  
EU participating  
regions!

SPEED UP  
Interreg Europe

<http://www.interregeurope.eu/speedup>

SPEED UP  
Interreg Europe

SPEED UP - Supporting Practices for Entrepreneurship  
Ecosystems in the Development of Urban Policies



 European Union  
European Regional  
Development Fund

## SPEED UP

Supports knowledge exchange on how cities promote entrepreneurship through business incubators. SMEs have been largely recognized to be the backbone of the EU economy and a key driver for growth and jobs. Regions and city governments, in partnership with universities and local stakeholders, have developed over the years policy measures and programmes dedicated to the creation and growth of young, innovative, creative and high-tech companies.



# SPEED Interreg

SPEED UP aims to improve the implementation of policy instruments under Structural Funds programmes dedicated to support of entrepreneurship, in particular concerning business incubation. To achieve this aim, the project will support collective learning and capacity building between partner organizations and relevant stakeholders that provide support to business creation, development and growth.

### The main goals are to:

- improve services provided by business incubators and ensure their financial sustainability;
- deepen the cooperation among public authorities, business sector, universities and R&D institutions;
- enable support to specific target groups, like young people, migrants or female entrepreneurs;
- develop performance monitoring systems for incubators and hosted startups.

### Main actions will include:

- exchange of experiences on the ways partners support their business incubators
- benchmarking of experiences against those of their peers
- learning about what works and what doesn't in different contexts
- developing action plans to put into action lessons learned from the cooperation

SMEs represent more than 90% of the total of companies in EU, with 20,7 million accounting for 67 % of total employment and 58% of gross value added. Among the many proposed solutions for the promotion of entrepreneurship, business incubation is one of the most effective instruments to help entrepreneurs to start new business.



### Project partners:



Municipality of Florence (IT)



Lisbon City Council (PT)



Economic promotion  
for East Brandenburg (DE)



City of Antwerp (BE)



Reims Metropole (FR)



Chamber of Commerce of Seville (ES)



City of Warsaw (PL)



National Association of Italian  
Municipalities – Tuscany (IT)



Tallinn Science Park Tehnopol (EE)